

TRADITIONALLY SWISS - PASSIONATELY HOSPITABLE



BEAU-RIVAGE PALACE - LAUSANNE



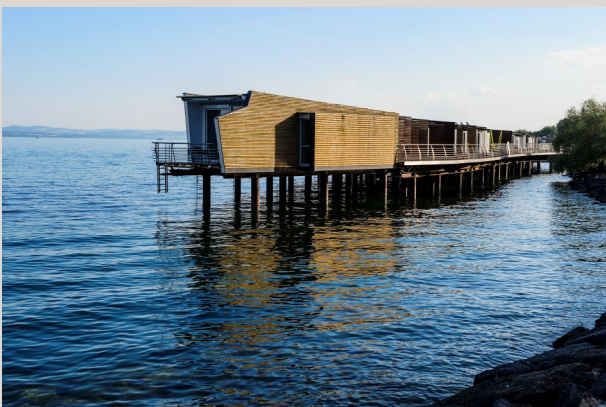
LAUSANNE PALACE - LAUSANNE



CHÂTEAU D'OUCHY - LAUSANNE



ANGLETERRE & RESIDENCE - LAUSANNE



PALAFITTE - NEUCHÂTEL



RIFFELALP RESORT 2'222M - ZERMATT

CAROLINE TOSTI
SALES MANAGER
+ 41 79 453 18 42

C.TOSTI@SANDOZ-HOTELS.CH

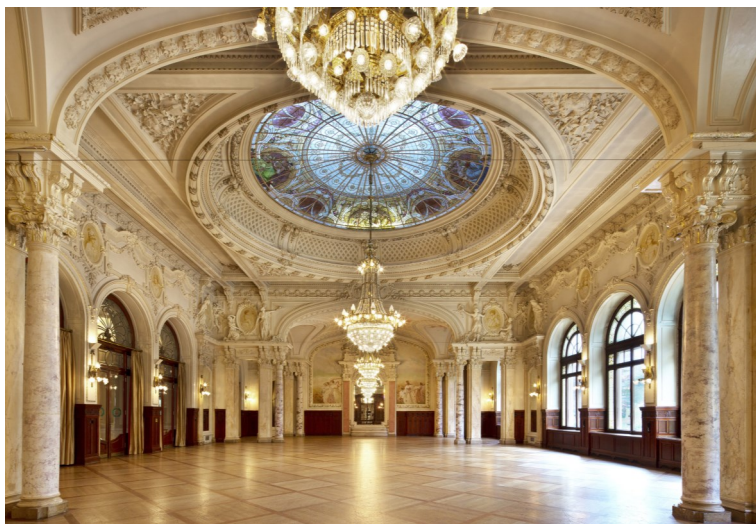


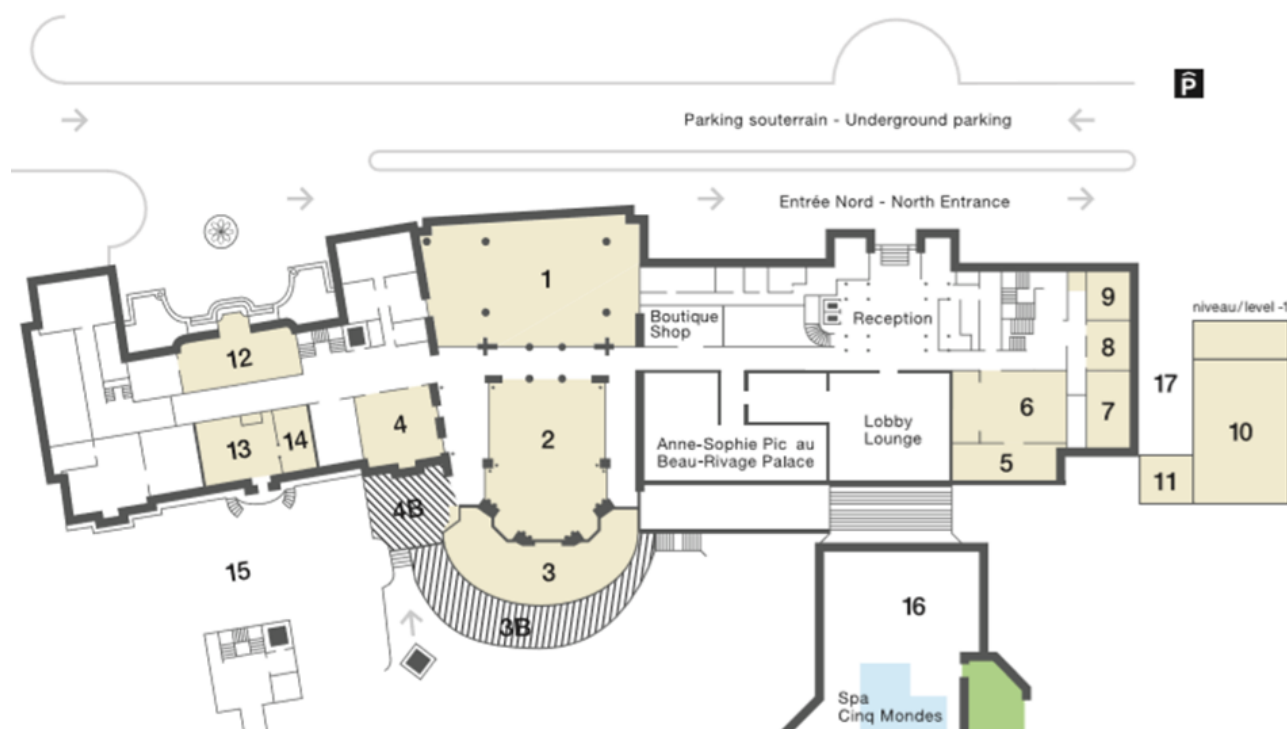
5 star hotel - 168 rooms and suites
10 acres of gardens
On the shores of Lake Geneva and view onto the Alps
5 restaurants including Anne Sophie Pic Restaurant 2 Michelin stars
2 bars
1,500 sqm Cinq Mondes Spa

Daily Delegate Rate: CHF 145.– per day and person
Half day: CHF 130.– per person
From 20 participants

Room Group Rates from CHF 350.– per person
From 10 rooms

- 14 conference rooms with natural light
- Audio-visual equipment, *except from Sandoz and Rotonde venues*
- Morning and Afternoon coffee breaks with Nespresso coffee
- Three-course business lunch or light buffet, mineral water and coffee
- Mineral water in the meeting room
- Complimentary Wifi
- Personal assistance from our seminar service team
- Service charges and VAT included





	Your venues	sqm	Cocktail	Cabaret	Theater	Banquet
1	Sandoz	430	600	160	300	350
2	Rotonde	236	250	100	200	180
3	Terrace	282	200	-	-	120
4	Léman	85	70	35	50	50
5	Hermitage	63	60	20	40	40
6	Romain	72	60	30	50	50
7	Beaux-Arts	40	20	-	30	24
8	Olympique	45	20	-	20	24
9	Elysée	60	Royal table : 14 people			
10	Forum	165	-	80	160	-
12	Arcades	104	100	45	100	80
13	Open library	106	60	-	-	-
14	Closed library	58	35	20	30	34
15	Terrace Palace	1000	350	-	-	-





5 star hotel - 140 rooms and suites
In the city centre next to the train station
Outdoor terrace overlooking Lausanne and the Lake Geneva
4 restaurants including La Table d'Edgard (1 Michelin star)
3 bars
2,100 sqm Spa

Daily Delegate Rates: CHF 125.– per person
CHF 120.– from 50 participants
Half Day: CHF 105.– per person
CHF 100.– from 50 participants

Room Group Rates from CHF 310.– per night and per person
From 10 rooms

- 14 conference rooms with complimentary mineral water
- Basic technical equipment (including projector, screen, flip chart).
- Morning and Afternoon coffee breaks with Nespresso coffee
- Three-course business lunch or buffet with mineral water and coffee
- Mineral water in the conference room
- Assistance from our seminar service staff throughout the event
- Service charges and VAT included



Your venues	sqm	Cocktail	Cabaret	Theater	Banquet
Richemont	250	350	100	340	220
Hans Emi	-	20	7	32	18
Olympique	106	80	36	80	70
Delamuraz	131	130	56	120	100
Ustinov	92	70	28	60	50
Delamuraz Ustinov	252	250	70	140	180
Olympique Delamuraz	236	300	100	180	220
Olympique Delamuraz Ustinov	330	400	120	230	300
Caveau du Palace	-	150	30	100	50
La Rotonde	150	180	-	-	120
La Rotonde + Bar 1915	-	250	-	-	120
Conference center	Delta	23	-	-	-
	Epsilon	23	-	-	-
	Sigma	34	-	-	-
	Oméga	23	-	-	-
	Iota	22	-	-	-
	Alpha	40	-	9	30
	Beta	37	-	9	30
	Gamma	50	-	14	50
	Delta Epsilon	47	-	12	32
	Delta Epsilon Sigma	80	-	21	70
	Iota Oméga	45	-	12	30
	Iota Oméga Sigma	78	-	21	70
	Alpha Beta	76	-	24	80
	Beta Gamma	86	-	27	90
	Alpha Beta Gamma	125	-	45	140





4 star hotel - 75 rooms and junior suites
6 buildings
Accademia, our Italian restaurant and its terrace
Outdoor swimming pool and 24h fitness/gym
Private terrace for your events

Daily Delegate Rates: CHF 120.– per person
Half Day: CHF 110.– per person
From 10 participants

Room Group Rates from CHF 260.– per night and per person
From 10 rooms

- 6 conference rooms
- Plenary rooms with natural light
- Basic technical equipment (including projector, screen, flip chart)
- Morning and Afternoon coffee breaks
- Three-course business lunch or buffet with mineral water and coffee
- Mineral water in the meeting room
- Complimentary Wifi
- Personal assistance from our seminar service team
- Service charges and VAT included

Your venues	sqm	Cocktail	Cabaret	Theater	Banquet	Bloc
Platane	70	60	25	72	56	28
Lord Byron	45	-	20	40	-	16
Lobby	42	40	15	36	32	8
Voûte	40	40	15	-	24	20
Lavaux	21	-	-	-	-	8
Côte	21	-	-	-	-	9





4 star hotel - 50 rooms and suites
57° Grill, our live cooking restaurant and its terrace
Direct access to Ouchy and its lakeside promenade
Private garden with outdoor swimming pool
Bar located at the main Tower under the canopy

Daily Delegate Rates: CHF 120.– per person
Half Day: CHF 110.– per person
From 10 participants

Room Group Rates from CHF 260.– per night and per person
From 10 rooms

- 4 event venues with natural light
- Basic technical equipment (including projector, screen, flip chart)
- Morning and Afternoon coffee breaks
- Three-course business lunch or buffet, mineral water and coffee
- Mineral water in the meeting room
- Complimentary Wifi
- Service charges and VAT included

Your venues	sqm	Cocktail	Cabaret	Theater	Banquet	Bloc
Vinothèque	50	40	20	40	42	20
Lounge	62	50	-	-	30	-
Lobby	150	150	-	-	80	-
Garden	-	150	-	-	40	-





5 star hotel
38 junior suites built on stilts
1 restaurant, La Table de Palafitte and its terrace overlooking the Lake Neuchâtel
Easy access from the highway

Daily Delegate Rates: CHF 120.– per person
Half Day: CHF 100.– per person
From 8 participants

Room Group Rates from CHF 250.– per night and per person
From 8 rooms

- 2 conference rooms with natural light
- Outdoor terraces for your event
- Basic technical equipment (including projector, screen, flip chart)
- Morning and Afternoon coffee breaks
- Three-course business lunch or buffet, mineral water and coffee
- Mineral water in the meeting room
- Complimentary Wifi
- Personal assistance from our seminar service team
- Service charges and VAT included

Your venues	sqm	Cocktail	Cabaret	Theater	Banquet	Bloc	U-shape
Chasseral	104	80	40	90	50	20	25
Chaumont	64	35	25	40	40	20	25





5 star hotel - 70 rooms
At 2'222 meters
Seasonal opening - from december to april and from june to september
3 restaurants
1 bar
Ski-in and Ski-out hotel
Amazing view on the Matterhorn
Spa 2'222m and its 2 indoor & outdoor swimming pools

Daily Delegate Rates: CHF 110.- per person

Room Group Rates from CHF 270.- per night and per person
In Summer

- 2 plenary rooms with natural light
- Basic technical equipment and flipchart
- Morning and afternoon coffee breaks
- 3-course business lunch
- Mineral water in your meeting room
- Complimentary wifi
- Service charges and VAT included

Your venues	sqm	Theater	School	Bloc
English Church	89	72	29	34
Weisshorn	52	46	21	20

